

NORTHERN TERRITORY
PARKS and CONSERVATION MASTERPLAN
PINE CREEK BIOREGION
CONSERVATION VALUES and
ENVIRONMENTAL RESOURCES



For further information contact:
Principal Scientist, Biodiversity Unit, Biodiversity Conservation,
Department of Natural Resources, Environment and the Arts.
Ph. (08) 8944 8451, Fax. (08) 8944 8455
CSIRO Research Centre, McMillans Road, Berrimah, Northern Territory of Australia.

Prepared and produced by

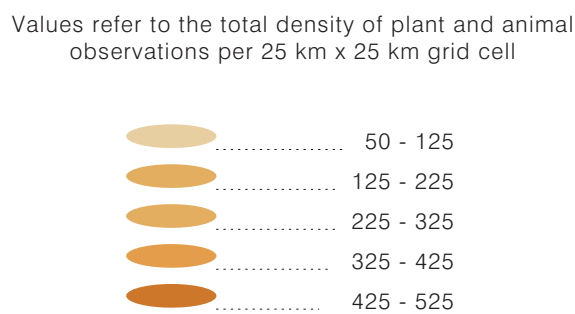
Natural Systems,
Department of Natural Resources,
Environment and the Arts,
Northern Territory of Australia.

ACKNOWLEDGEMENTS

Project Scientist - G Connors, Biodiversity Unit,
Project coordination by J Woinarski,
Principal Scientist, Biodiversity Unit, Biodiversity Conservation,
Department of Natural Resources, Environment and the Arts.

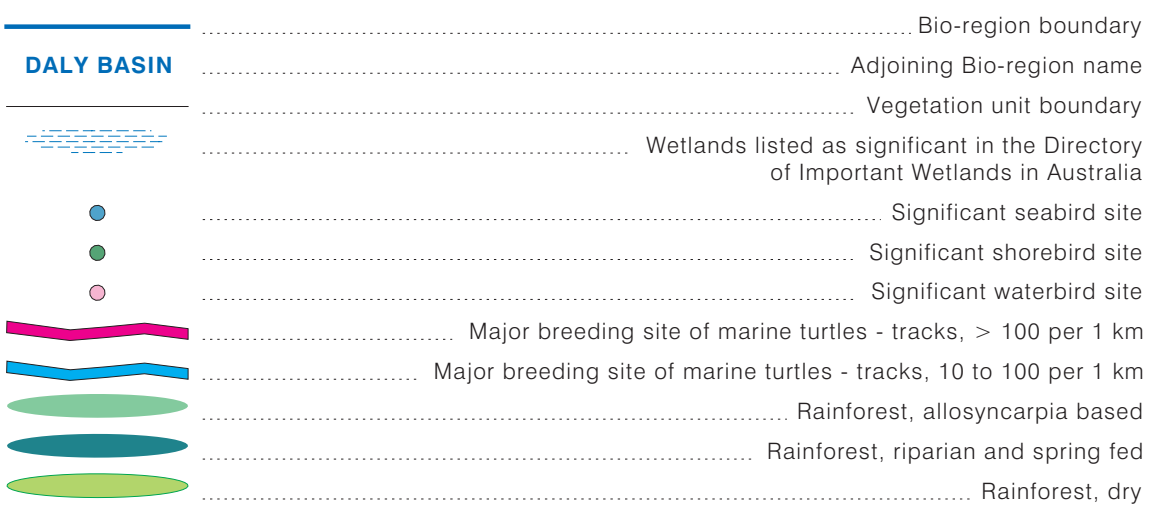
Cartography by L. Fritz,
Spatial Data and Mapping,
Natural Systems, January 2004.

SPECIES DENSITY / DATA RELIABILITY



The known locations of threatened plants and animals (i.e. those listed as endangered or vulnerable under regulations of the Commonwealth's Environment Protection and Biodiversity Conservation Act and the Northern Territory's Territory Parks and Wildlife Conservation Amendment Act 2000) are indicated on this mapping. Note that sampling incompleteness may mean that threatened species may occur at sites other than those shown.

BIODIVERSITY FEATURES



FAUNA DESCRIPTIONS

- Vulnerable
- Endangered
- Critically Endangered

Amytornis woodwardi
Ardeotis australis
Conilurus penicillatus
Dasyurus hallucatus
Dipodactylus ocellatus
Dromaius novaehollandiae
Ephianura crocea tunneyi
Erythrorhynchus radiatus
Erythrura gouldiae
Hipposideros inornata
Mesembriornis macrurus
Morelia oerpellensis
Phascogale pirata
Pseudomys australis
Zygomys maini

FLORA DESCRIPTIONS

- Vulnerable
- Endangered
- Critically Endangered

Acacia praetermissa
Boronia tolerans
Cephalomanes obscurum
Cycas armstrongii
Dichapetalum timoriense
Dubouzetia australiensis
Endiandra limnophila
Freycinetia excelsa
Gleichenia microphylla
Grevillea longicuspis
Habenaria rumphii
Helicteres D2164 Glenluckie Creek
Hibiscus brennani
Indigolera schultzeana
Lithomyrtus linearifolia
Luisia teretifolia
Nervilia plicata
Psychosperma macarthurii
Schoutenia ovata
Utricularia dunstaniae
Utricularia singeriana
Utricularia subulata
Zeuxine oblonga

VEGETATION UNIT DESCRIPTIONS

Vegetation types as defined in the 1 : 1 000 000 vegetation map of the Northern Territory

CLOSED FORESTS

- 1 Mixed species closed-forest (Monsoon vine-thicket).
- 2 *Allosyncarpia ternata* closed-forest.

EUCALYPT with GRASS UNDERSTOREY

OPEN FORESTS

- 4 E. miniata (Darwin Woolly Butt), E. tetradonta (Stringybark) open-forest with Sorghum grassland understorey.

WOODLANDS

- 8 E. tetradonta (Stringybark), E. miniata (Darwin Woolly Butt), E. ferruginea (Rusty Bloodwood) woodland with Sorghum grassland understorey.
- 9 E. tetradonta (Stringybark), E. miniata (Darwin Woolly Butt), E. blesieri (Smooth-stemmed Bloodwood) woodland with Sorghum grassland understorey.
- 11 E. miniata (Darwin Woolly Butt) woodland with grassland understorey.
- 12 E. miniata (Darwin Woolly Butt), E. tetradonta (Stringybark) woodland with Plectrachne pungens (Curly Spinifex) grassland understorey.
- 13 E. tetradonta (Stringybark), E. miniata (Darwin Woolly Butt), E. dichromophloia (Variable-barked Bloodwood) woodland with Plectrachne pungens (Curly Spinifex), Chrysopogon fallax (Golden Beard Grass) grassland understorey.
- 15 E. tectifica (Northern Box), E. latifolia (Round-leaved Bloodwood) woodland with Sorghum grassland understorey.
- 17 E. dichromophloia (Variable-barked Bloodwood), E. tetradonta (Stringybark) woodland with grassland understorey.
- 18 E. papuana (Ghost Gum), E. polycarpa (Long-fruited Bloodwood) woodland with grassland understorey.
- 19 E. terminalis (Bloodwood), E. patellaris (Weeping Box) woodland with grassland understorey.

LOW WOODLANDS

- 21 E. tintinnans (Salmon Gum) low woodland with Sorghum grassland understorey.
- 23 E. pruinosa (Silver Box) low woodland with Eulalia aurea (Silky Browntop), Selima nervosum (White Grass) grassland understorey.

EUCALYPT with HUMMOCK GRASS UNDERSTOREY

LOW WOODLANDS

- 29 E. phoenicea (Scarlet Gum) low woodland with Plectrachne pungens (Curly Spinifex) hummock grassland understorey.

LOW OPEN WOODLANDS

- 32 E. dichromophloia (Variable-barked Bloodwood), E. miniata (Darwin Woolly Butt) low open-woodland with Plectrachne pungens (Curly Spinifex) open-hummock grassland understorey.

MISCELLANEOUS SHRUBLANDS

- 48 Livistona humilis (Fan Palm) tall open-shrubland with Sorghum grassland understorey.

MELALEUCA FOREST to WOODLANDS

- 51 Melaleuca viridiflora (Broad Leaved Paperbark), Eucalyptus low open-woodland with Chrysopogon fallax (Golden Beard Grass) grassland understorey.

FLOODPLAINS

- 53 Melaleuca forest (Paperbark Swamp).
- 54 Mixed closed-grassland/sedgeland (Seasonal Floodplain).

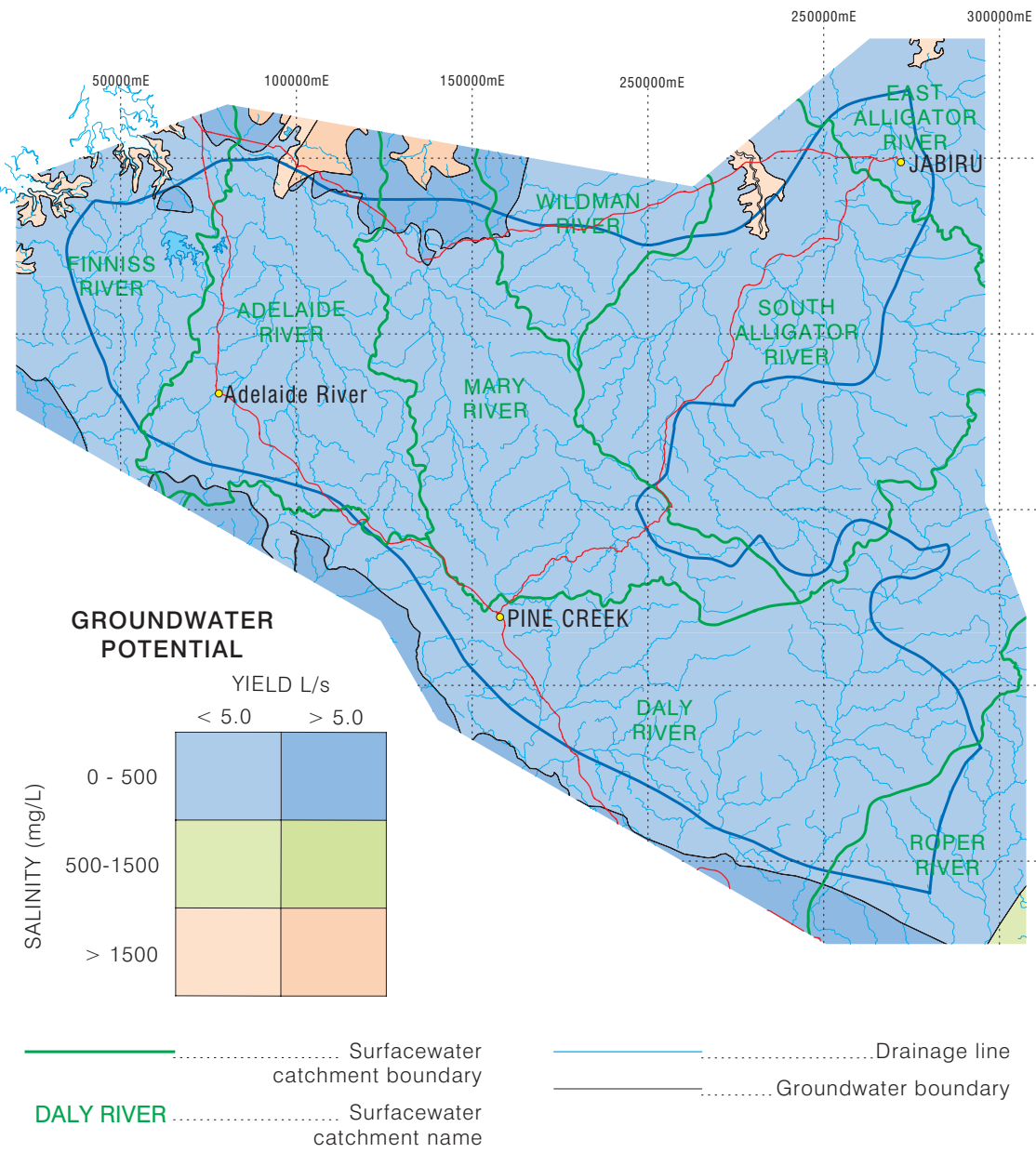
ACACIA with GRASS UNDERSTOREY

- A. Shirleyi (Lancewood)
Complex of A. shirleyi (Lancewood) low-woodland mixed with Eucalyptus low open-woodland.

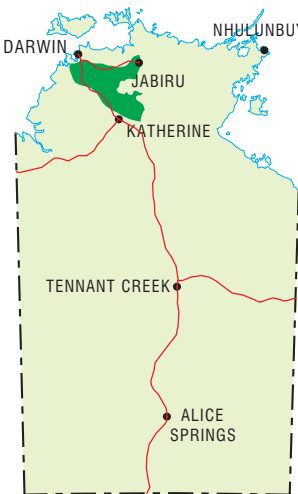
LITTORAL

- 105 Mangal low closed-forest (Mangroves).

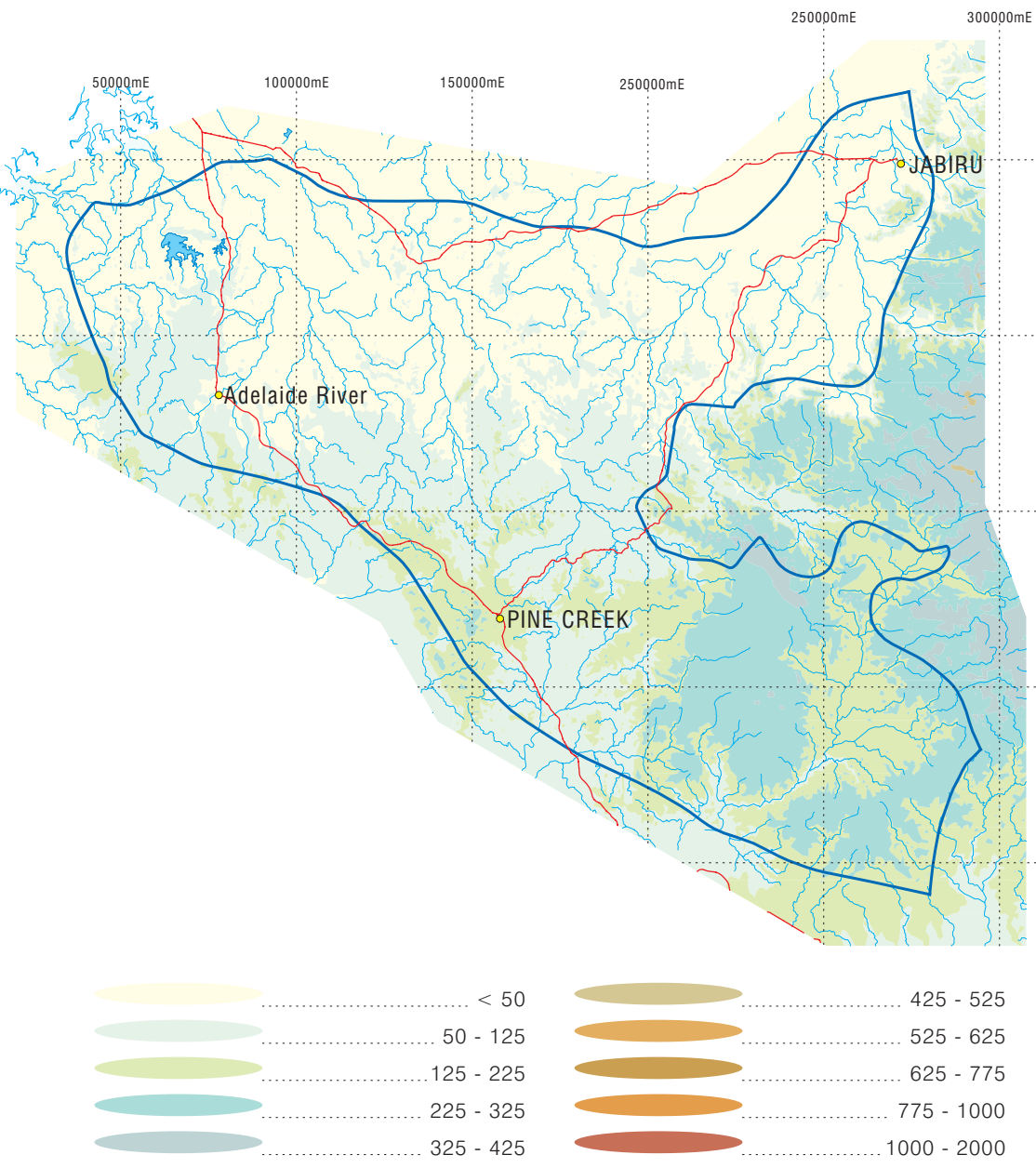
SIGNIFICANT WATER RESOURCES



MAP LOCALITY



RANGE OF TOPOGRAPHY



BIOREGION SUMMARY

BIOREGION	AREA - ha	PROTECTED AREA - ha	% PROTECTED
Pine Creek	2845466	1212844	42.623

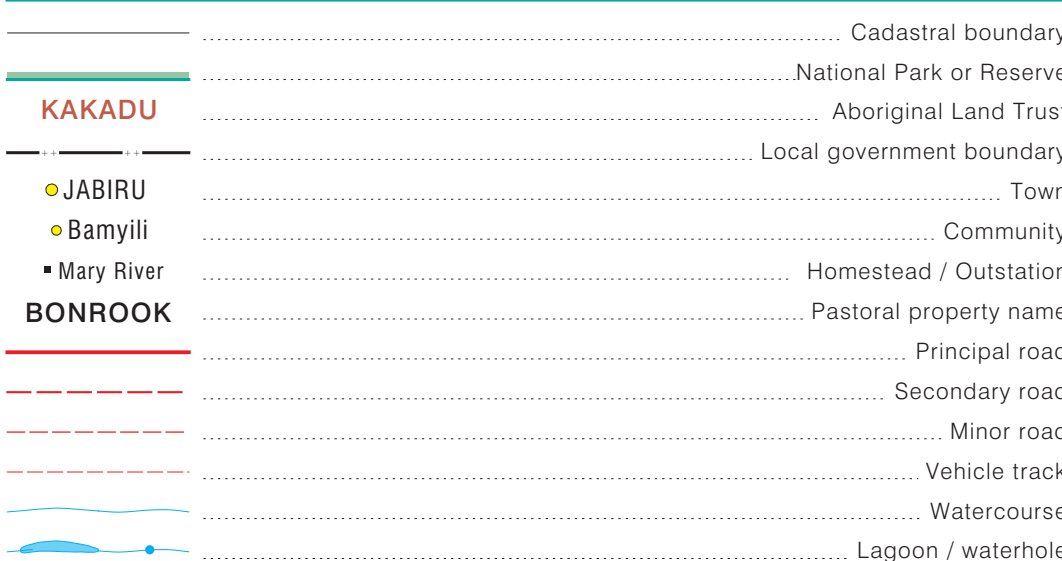
EXTENT OF VEGETATION BY UNIT

VEGETATION UNIT	AREA - ha	% of NT AREA	% PROTECTED within NT	% of BIOREGION AREA	% PROTECTED within BIOREGION
1	614	2.528	6.474	0.021	0
2	5522	7.159	32.998	0.194	97.281
4	174043	3.407	11.387	6.116	69.011
8	32910	2.095	8.617	1.156	51.635
9	123820	9.966	7.146	4.351	3.850
11	117433	79.095	22.267	4.127	23.072
12	143735	58.097	53.421	5.051	91.732
13	79624	6.438	10.442	2.798	23.345
15	1531220	31.188	17.997	53.812	40.913
17	223	0.012	0.069	0.007	0
21	385975	51.240	24.133	13.563	25.480
29	19789	2.205	13.712	0.695	91.550
32	71507	3.094	21.992	2.513	78.268
51	112637	21.387	13.650	3.958	56.967
53	11460	7.217	27.232	0.402	100
54	29783	3.417	24.419	1.046	45.436
56	5180	1.590	5.940	0.182	0

EXTENT OF VEGETATION BY CLASS

VEGETATION CLASS	AREA - ha	% of NT AREA	% PROTECTED within NT	% of BIOREGION AREA	% PROTECTED within BIOREGION
Closed Forest	6136	5.306	29.520	0.215	87.537
Eucalyptus Forest and Woodlands with Tussock Grass Understorey	2203013	1.272	13.714	77.421	42.935
Eucalyptus Low Woodland with Tussock Grass Understorey	385957	0.840	1.037	13.563	25.480
Eucalyptus Woodland with Hummock Grass Understorey	91297	0.084	7.789	3.208	81.147
Melaleuca Forest and Woodlands	112637	5.417	7.384	3.958	56.967
Floodplain	41244	2.013	24.997	1.449	60.598
Acacia Woodland	5180	0.003	1.157	0.182	0

GENERAL FEATURES



This map was produced on the Geocentric Datum of Australia 1994 (GDA 94)

Black numbered lines are 50000 metre intervals of the Map Grid of Australia (MGA) Zone 53

Universal Transverse Mercator Projection
Horizontal Datum: GDA 94 Vertical Datum: AHD (metres)

Design File: Pine-Creek_Master-Plan_m53
Plot File: Pine-Creek_Master-Plan

This product and all material forming part of it is copyright belonging to the Northern Territory of Australia. You may use this material for your personal, non-commercial use or use it within your organisation for non-commercial purposes, provided that an appropriate acknowledgement is made and the material is not altered in any way. Subject to the fair dealing provisions of the Copyright Act 1968, you must not make any other use of this product (including copying or reproducing it or part of it in any way) unless you have the written permission of the Northern Territory of Australia to do so.

The Northern Territory of Australia does not warrant that the product or any part of it is correct or complete and will not be liable for any loss damage or injury suffered by any person as a result of its inaccuracy or incompleteness.